

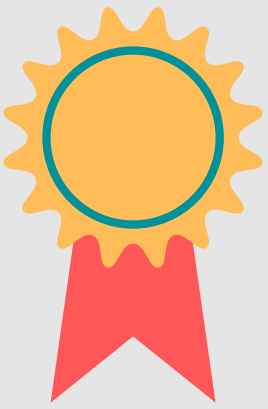
DASH CHEAT SHEET

For Fostering School Connectedness



1 PROFESSIONAL DEVELOPMENT

- Offer opportunities for staff to learn ways to organize and structure the classroom that promote a positive environment.
- Support learning teams among teachers by offering time for collaboration.



2 LEADERSHIP

- Engage staff, parents, students and community members when developing school policies and planning school activities.
- Ask all members of the school community to identify ways to make the school environment more pleasant.



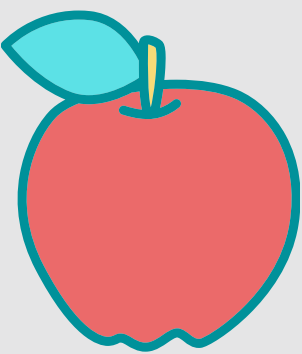
3 FAMILY INVOLVEMENT

- Provide opportunities for families to learn and develop skills. Consider creative alternatives for hard-to-reach parents/guardians.
- Encourage families to reinforce the schools' behavioural and academic expectations at home.



4 SOCIAL & EMOTIONAL SKILLS

- Provide opportunities in the classroom for students to improve their interpersonal skills (e.g. problem solving, conflict resolution).
- Include time throughout the day to check-in with students on a personal level and encourage them to label and express their feelings.



5 CLASSROOM MANAGEMENT

- Communicate clear expectations for learning and behaviour.
- Use a variety of teaching methods and activities.
- Engage students in leadership roles in the classroom.



6 CARING RELATIONSHIPS

- Allow students and their parents to use the school building and property outside of school hours.
- Have all school staff commit to and model caring behaviour to each other.
- Encourage staff to greet each student by name.

CREATED BY [DASH](#), 2021

Adapted from: [Centers for Disease Control and Prevention. School Connectedness: Strategies for Increasing Protective Factors Among Youth. Atlanta, GA: U. S. Department of Health and Human Services; 2009.](#)